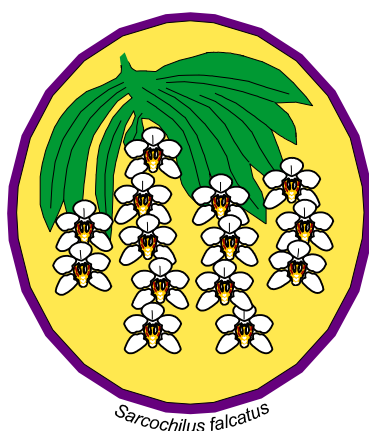


Tan Bark

Toowoomba Orchid Society Inc
PO Box 7710, Toowoomba Mail Centre Qld, 4352
ABN: 32 603 296 231



Next General Meeting Friday 26th March 2010

Meetings:	Fourth Friday of each month except September and December. Meeting commences at 7.30 pm
Venue:	St Pauls Hall (cnr James & Phillip Streets)
Membership Fee:	\$15

Disclaimer: While every effort is made to ensure the accuracy of the content of Tan Bark, the Toowoomba Orchid Society Inc accepts no liability for the views expressed by the author/s of the published article/s or for damage to or loss of plants, from actions taken by members, as a result of articles or views expressed in Tan Bark. No part of this publication is to be reproduced without the written permission of the Tan Bark editor.

2010 OfficeBearers & Committee Members

President: Rick Emmerson 46 976126

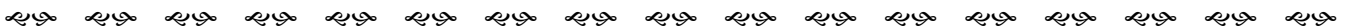
Secretary: Angela Emmerson 46 976126

Treasurer: Carolyn Armstrong 46966160

Email: tanbark_toowoomba@hotmail.com
Patron: Les Lobley
Vice President: David Woolf 46590780
Assistant Secretary:
Assistant Treasurer:
Editor: Carolyn Woolf 46590780
possumwoolf@hotmail.com
Assistant Editor: Chrissy Neylon 46360576

Committee:
Photographic David Woolf
Internal Shows Kev Baker 46324952
External Events Andrew Neylon 46360576
Meeting Nights Len Cherry 46358919
Constitution & By-Laws Max Bishop 46966366
New Members Peter Neylon 46355299
Functions **Rick Emmerson** 46976126
Day Society **Angela Emmerson** 46976126

Publicity & Promotions: Heather Guppy 46345658
Meeting Recorder: Ian Walker 46876932
Points Recorder: Ian Walker
AOC Contact: Gordon Bloodworth 46353341
Librarian: Fred Reed 46931893
Helen Sanderson
Auditor: Merv Bond 46352530



NEXT MEETING: Friday 26th March 2010 at 7.30 pm. There will be a presentation given by David Woolf on AOC Awards.

QOS Show: The next QOS Show is at Mt Coot-tha Botanical Gardens, Brisbane. March 26th to 28th 2010. 8.30am — 3.30 pm.

LIBRARY BOOKS & JOURNALS: We have a great selection of books and magazines in the library which can be borrows at meetings.

POTS & TAGS For members, plastic pots, plastic tags and plastic pot hangers are available from Graham Vettiger, phone 46353731. Bark, Perlite, Peat etc is available from WOOLF ORCHIDCULTURE at competitive prices.

*GET WELL WISHES are sent to Connie Williams,
we hope you feel better soon.*

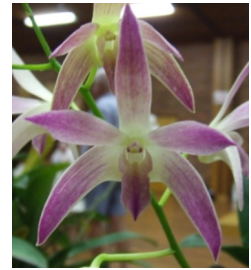
Affiliation: Queensland Orchid Society, Australian Orchid Council



Sarc hirticalcar - M Zink



Liparis species Ex Africa - M Zink



Den Anne's Rainbow Surprise P Noone



Sarc hartmannii x sarc hirticalcar - J&J Sheath



Slc Jungle Gem - D&C Woolf



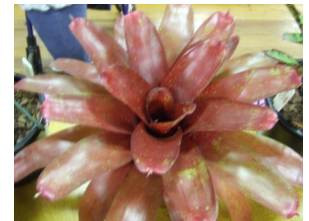
Cattleya bowringiana x labiata - C&E Dedekind



Phalaenopsis cornu-cervi - W Williams



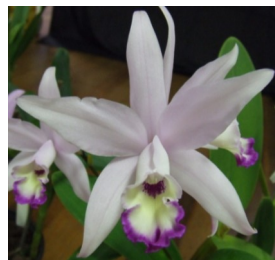
Onc. Geon - D&C Woolf



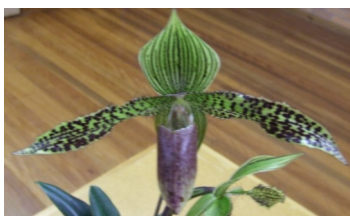
Neo Painted Desert - B Polzin



Lctna Drummer Boy - D&C Woolf



Cattleya unknown - C&D Dedekind



Paph lantha Stage - D&C Woolf



Sc Royal Beau - B Lander

Results of February Meeting

Australian Native Species:	Sarc hirticalcar	M Zink
Australian Native Hybrid:	Sarc hartmannii x sarc hirticalcar	J&J Sheath
Exotic Species:	Phalaenopsis cornu-cervi	W Williams
Exotic Hybrid:	Lctna Drummer Boy	D&C Woolf
Seedling:	Paph lantha Stage	D&C Woolf
Novice:	Sc Royal Beau	B Lander
Cultural Plant:	Liparis species Ex Africa	M Zink
Judges Choice 1st:	Lctna Drummer Boy	D&C Woolf
Judges Choice 2nd:	Slc Jungle Gem	D&C Woolf
Judges Choice 3rd:	Onc Geon	D&C Woolf
Plant of Interest:	Cattleya unknown	C&D Dedekind
Popular Vote Exotic:	Slc Jungle Gem	D&C Woolf
Popular Vote Native:	Den Anne's Rainbow Surprise	P Noone
Golden Oldie:	Cattleya bowringiana x labiata	C&E Dedekind
Popular Vote Bromeliad	Plant No 13	J&A Miller

**Toowoomba Orchid Society Inc February General Meeting Minutes
St Paul's Lutheran Church Hall, Friday 26th February 2010**

The meeting was opened by President Rick Emmerson at 7:30pm.

Apologies as per the attendance book, plus John & Jeannie Woolf.

President Rick welcomed our visitors for the evening, Alan Alvis & Colleen & John Terry.

President Rick welcomed new members Reg Dix & John Albiez.

Judges for the evening are -----Peter Neylon, Athol Rosenberg & Michael Zink.

Minutes of the previous meeting. Moved by John Middleton, seconded by David Woolf that the minutes of the October 2009 meeting, as printed in November Tanbark, are a true and correct record of the meeting. Carried. Business arising held over to general business.

Correspondence

Inwards

Accounts:

Receipt St Pauls: \$550.00; Invoice Glenda Neylon: \$40.00; Melco Storage: \$588.00; Snap Printing Invoice: \$94.20; Account Woolf Orchid Culture: \$142.50.

Letters & Emails:

Sunshine Coast Orchid Society Caloundra CD & Flyers for Orchidfest; Email from Sunshine Coast Orchid Society re: floor size for display; Toowoomba Spinners, Weaves & Dyers invitation to display 6 June 2010; Toowoomba Regional events register confirmation of listing; Easy Orchids 2010 product catalogues; Dot Andrews thanking for flowers.

Newsletters & Bulletins:

Sunshine Coast Orchid Society Caloundra, NOSTI, Westbos, Bribie Island Orchid Society, Redcliffe District Orchid Society, Southport Orchid Society, Nambour Orchid Society, EDOS, NSW Orchid Society, Townsville Orchid Society.

Show Schedules:

Redlands Orchid Society, EDOS Autumn Show, Bribie Island Orchid Society Easter Show Flyer, Tropical Qld Orchid Council Flyer & Registration.

Publications:

Orchids Australia February 2010; Australian Orchid Review Feb/Mar 2010.

Outwards:

Summerland Coaches re: spring show dates; Athol Rosenberg re: meeting night judging.

Moved by Secretary Inge that the inwards correspondence be accepted and the outwards endorsed. Seconded by Dan Phillips . Carried.

General Business

Tomorrow's Bus Trip. Reminder leaves from Woolf Orchid Culture at 7:00am.
Nominations for delegates for sub-committees are now open. Please nominate for any of the ten committees, you are welcome to nominate for more than one if you wish.

Invitation by Maree Illingworth of QOS to show new management presentation to them.

Please remember that your membership is due. If you are going on the bus trip please be paid before so, to ensure coverage under public liability.

QOS Awards, presented by Athol Rosenberg. Congratulations to the recipients of these awards.

AOC Awards, presented by Alan Alvis. Congratulations to the recipients of these awards.

Growing plant competition was judged. Congratulations to Joan Naumann who won this competition.

Geoff Deacon, conveyed message from the Toshak & Hina Patel that they are closing down their business, Gloria Jeans, at Clifford Gardens.

Bruce Vayro invited all TOS members to attend the Lockyer Valley Orchid Society's meeting on the 6th April 2010 when Bob & Lyn Sullivan from Weird & Wonderful Orchids, NSW, would be attending bring with them a collection of orchids for a presentation. Plants will be available to buy. Held at the Gatton Show Grounds beginning at 7:30pm.

Judges Results

Athol Rosenberg ran through the judge's selections and the popular vote. Our thanks go to the judges.

Raffle

Plants tabled winner Michael Zink & David Woolf.

Fruit Tray winner was Inge Anderson and the voucher winners were Fred Reed & Graham Vettiger.

Meeting was closed at 9:00pm.



Happy Diners Report

Lunch at the City Golf Club was great. Members on hand welcomed new members Doug & Annette Caswell. A great meal was enjoyed by all, as well as lots of chatter. For April Happy Diners we agreed the place to go would be Highfields Bowls Club, 55 Highfields Rd, Highfields, on the left of the highway.

Wednesday, 7th April 2010, 11.30 am

Bring your friends and we can try a game of bowls. **Remember it is open to all.**



* There where two snakes talking. The 1st one said Sidney, are we the type of snakes who *
* wrap ourselves around our prey and squeeze and crush until they're dead? Or are we the *
* type of snake who ambush our prey and bite them and they are poisoned?. Then the second *
* Snake says Why do you ask? The 1st one replies: I just bit my lip! *

Culture

It is reasonably easy, given the wealth of material available, to get a collection of these. Watch the plants tabled at your local society meetings and shows for flowers that take your eye. Approach the owners, ask them what conditions they grow their plants under, and if your growing conditions are similar see if they have a division available for sale or where you can obtain that plant or something similar.

Temperature

Most Oncidiums within this group will grow well under cool to Intermediate conditions, minimum of 3 Degrees Celsius to a maximum of 30 Degrees Celsius. There are always exceptions, some will grow colder/warmer, as with all new babies 'test the water first'.

Light

These orchids like to be reasonably shady, mostly around 50% – 60% light will suffice. If the leaves become too yellow, the flower racemes are short and crowded, reduce the light. If the leaves are too green and the flower racemes are weak and straggly, increase the light. You will have to 'play around' with them a little to find the right place in your orchid house as we all have slightly different growing conditions, even if we are close neighbours.

Compost (Growing Media or Potting Mix)

Whatever you call it, it needs to be: -

For Pots,

- a. Long lasting
- b. Well draining
- c. Have reasonable air space between the particles
- d. Be ready for the roots to feel at home in
- e. Be of a grade (size) suitable to the size of plant and pot used

We have used a composted bark, however no matter what you use, the media must never be allowed to sour, re-pot regularly, at least every three years. The lasting quality of your potting media is governed by the following factors: -

- a. Type of pot, plastic or clay
- b. Quality of Water
- c. Type of fertiliser used, Organic, inorganic, chelated or non-chelated
- d. Air movement around pots
- e. Frequency of watering
- f. Cleanliness, keeping your plants pest free. Some pests will reduce your bark to mud very quickly if not kept in check

For Mounts they need to be,

- a. Long lasting.
- b. Well draining.

Some types of mount that are suitable.

- a. Virgin Cork.
- b. Hardwood slabs.
- c. Black tree fern.
- d. Cedar slabs.
- e. Ironbark slabs.
- f. Red bottlebrush.

Check your media, mount & root system regularly, watch for salt build up around the drainage holes and roots burning off when hitting the media/mount as they touch the media/mount.

Humidity

These plants like a relative humidity of around 50% - 60%, this will depend on your other growing conditions such as air movement and potting media/mount. On very hot days, add humidity by wetting the floor of your orchid house, don't wet the plants until the 'sting' has gone out of the temperature late in the evening. In the colder months keep the plants dryer at night.

Watering

This also depends greatly on other factors such as air movement, water quality, potting media temperature etc. These plants like to be moist (not wet) at all times as they tend to grow all year round. Remember the old rule “If you’re not sure whether to water or not, then don’t”. Water plants late evening in hot weather so they can make the most if it during the cooler night temperatures. In the colder times water mid morning so the plants (not the potting media) are dry by nightfall, thus reducing the possibility of fungal spotting and damage from frost. The quality of water is important. If you have bad water (high in salts), it is detrimental to the good health of your plants. If this occurs, water your plants heavily as misting will only increase the salt build up on the top of your potting media.

Fertiliser

This has to be balanced against your other growing conditions. A good, well balanced fertiliser made from chelated ingredients is preferred as this tends not to build up unused salts on and in your potting media, lengthening the life of the potting media and the time between re-pots. Plants growing in a lot of light or growing in a bark potting media will require a higher nitrogen fertiliser than those growing in more shaded conditions. We use a low nitrogen mixture on adult plants all year as they tend to flower several times per year.

Air Circulation

This is a must for any orchid. Good air circulation will prevent many fungal and bacterial problems from arising and will limit the spread of any problems that occur. A good buoyant atmosphere should be maintained at all times.

Pests and Diseases

These plants can suffer from all the usual nasties. Remember, a pest is like a weed; it’s just in the wrong place doing the wrong thing, in its homeland I’m sure it has a good role to play. Keep your orchid house free of pests and diseases keep the house clear of dead tissue (leaves, etc) and the surrounding area neatly mowed. If you have any citrus trees nearby keep them sprayed for Scale and Mealybug. If an outbreak of any pest or disease occurs have them / it properly diagnosed and treat accordingly. Remember most chemicals these days are specific and you won’t control the problem if the chemical is not designed to combat that particular pest / disease.



Bray Park Bus Trip

We had a very enjoyable trip to the Bray Park Show. There were lots of beautiful plants on display and for sale and as you can see some of our members just had to add more orchids to their collections.



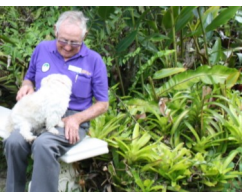
Graham Mackay's amazing display of phalaenopsis



A beautiful specimen dendrobium



Doug & Kath Wanka had an impressive display of dendrobiums, cattleyas and softcanes. Afternoon tea was impressive too.



Spence & Lynne Grubb had bromeliads as far as the eye could see, and Len found himself a friendly mate.

Toowoomba Orchid Society Inc
PO Box 7710, Toowoomba Mail Centre
Qld, 4352

«First Name» «Last Name»
«Street Address»
«City»

Walsh's Seeds & Garden Centre
881 Ruthven Street, Toowoomba
Phone 4636 1077
Home Garden Requirements



- * Orchid Potting Mixes and separate ingredients.
- * Fertilisers
- * Chemicals
- * Flower & Vegetable Seedlings

' FOR GREAT VALUE SEED '

Orchid Species & Hybrids
Woolf Orchid Culture
When Experience and Knowledge Count
John, Jeanette, David & Carolyn
ABN 45 443 107 384
Nursery: 57 - 65 Colvin Street, Drayton QN 4350
Phone 07 46361788 Fax 07 46362762
eMail: jwoolf@ozemail.com.au
Website: <http://www.woolforchidculture.com>

Very large range, many rare species.
Bark, Perlite & Peat, Labels etc.

